

T-ball/Softball 2012

Coach's Registration

January 7th

Player Registration

January 14th– March 3rd

Coach's meeting & Clinic

March 20th @ 6:30pm

Practice Begins

March 26th

Games Begin: April 14th

League Ends: June 23rd

Cost \$70

Includes: Uniform,
Trophy, Pictures, Fun!



County of Los Angeles
Department of Parks and Recreation
North County Community Services Agency

Castaic Regional Sports Complex

31230 Castaic Road, Castaic, CA 91384

Call (661) 775-8865/66 or Fax (661) 257-8730



Summer Basketball 2012

Coach Registration:

March 10th

Player Registration:

Jan 14th-March 3rd

Coach's Meeting & Clinic

May 22nd @ 6:30pm

Practice Begins:

June 11th

Games Begin: July 7th

League Ends: August 4th

Cost \$50

Includes: Uniform,
Trophy, and Fun!



SPECIAL EVENTS

Halloween Haunt

Sat October 29th 2:00pm-6:00pm

Turkey Tussle

Sat November 19th 12:00pm-2:00pm

Winter Wonderland

December 10th 10:00am -3:00pm



Pee Wee Nerf

Flag Football

Coach's Registration

November 12th

Player's Registration

November 19th-Jan 7th

Coach's Meeting & Clinic

January 17th @ 6:30pm

Practice Begins

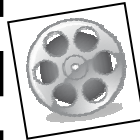
February 6th

Games Begin: February 25th

League End: March 24th

Cost: \$50

Includes Jersey and Trophy



FALL DAY CAMP

Session 1: October 3rd-7th

Camp Time: 10am-3pm

Registration starts: Aug 27th-Oct 1st

Winter Day Camp

Session 1: Dec. 26-30

Session 2: Jan. 2-6

Camp Time: 10am-3pm

Registration starts Nov. 5th - Dec. 23rd

Spring Day Camp

Session 1: April 2-9

Camp Time: 10am-3pm

Registration starts Feb. 18th - March 30th

Cost for Day camps \$60.00



Classes

Karate

Year Round!

Tue & Thu

4:00pm-5:00pm

661-714-2028



Ms. Nikki's

Preschool

Mon -Fri

9am-12pm

661-775-8867

Kalakeke

Learn to Hula

Wed & Fri

661-294-3062



Wrestling

Mon & Wed.

6:15pm-8:15pm

\$5.00 Weekly

ADA NOTICE

Pursuant to the Americans with Disabilities Act (ADA), the County of Los Angeles Department of Parks & Recreation has designated an ADA coordinator to carry out this department's compliance with the non-discriminatory provisions of the ADA. For more information you may contact the ADA Coordinator's Office. TEL 213-738-2970 TDD 213-427-6118 FAX 213-487-0380 Upon 3 day request notice, sign language interpreters and related materials in alternative formats (Braille-transcript, large print, audio-record, video-captioning, live description) or any reasonable accommodations are available to the public for County-sponsored activities and events.

T-ball/Softbol 2012

Registracion de Entrenadores:

Enero 7

Registracion de Jugadores

Enero 14- Marzo 3

Junta de Entrenadores

Marzo 20 a las 6:30pm

Practica Empieza

Marzo 26

Juegos Empiezan Abril 14

Liga Termina Junio 23

Precio \$70

Incluye: Uniforme,
Trofeo, Fotos, Diversion!



Eventos Especiales

Halloween Haunt

Sab Octubre 29 2:00pm-6:00pm

Evento de Pavo

Sab Noviembre 19 12:00pm-2:00pm

Maravillas de Invierno

Diciembre 10 10:00am -3:00pm



Baloncesto de Verano 2012

Registracion de Entrenadores:

Marzo 10

Registracion de Jugadores:

Enero 14-Marzo 3

Junta de Entrenadores y Clinica

Mayo 22 a las 6:30pm

Practica Empieza:

Junio 11

Juegos Empiezan: Julio 7

Liga Termina: Agosto 4

Precio \$50

Incluye: Uniforme,
Trofeo, y Diversion!

Pee Wee Nerf Futbol Americano

Registracion de Entrenadores:

Noviembre 12

Registracion de Jugadores:

Noviembre 19-Enero 7

Junta de Entrenadores:

Enero 17 a las 6:30pm

Practica Empieza:

Febrero 6

Juegos Empiezan: Febrero 25

Liga Termina: Marzo 24

Precio: \$50

Incluye Camisa y Trofeo



Campo de Otono

Sesión 1: Octubre 3-7

Tiempo de Campo: 10am-3pm

Registracion Empieza: Ago 27-Oct 1

Campo de Invierno

Sesión 1: Dic. 26-30

Sesión 2: Ene. 2-6

Tiempo de Campo: 10am-3pm

Registracion Empieza Nov. 5 -Dic. 23

Campo de Primavera

Sesión 1: Abril 2-9

Tiempo de Campo: 10am-3pm

Registracion Empieza Feb. 18 - Marzo 30

Precio por Campos: \$65.00



Clases

Karate

Todo el Año!

Mar. y Jue.

4:00pm-5:00pm

661-714-2028



Kalakeke

Aprende Hula

Mier. y Vier.

661-294-3062



Ms. Nikki's Preschool

Lunes -Viernes

9am-12pm

661-775-8867

Lucha

Lun. y Mier.

6:15pm-8:15pm

\$5.00 cada clase

ADA NOTICE

Pursuant to the Americans with Disabilities Act (ADA), the County of Los Angeles Department of Parks & Recreation has designated an ADA coordinator to carry out this department's compliance with the non-discriminatory provisions of the ADA. For more information you may contact the ADA Coordinator's Office. TEL 213-738-2970 TDD 213-427-6118 FAX 213-487-0380 Upon 3 day request notice, sign language interpreters and related materials in alternative formats (Braille-transcript, large print, audio-record, video-captioning, live description) or any reasonable accommodations are available to the public for County-sponsored activities and events.